

Sliding Pocket Wall, 6 Panels, Symmetrical

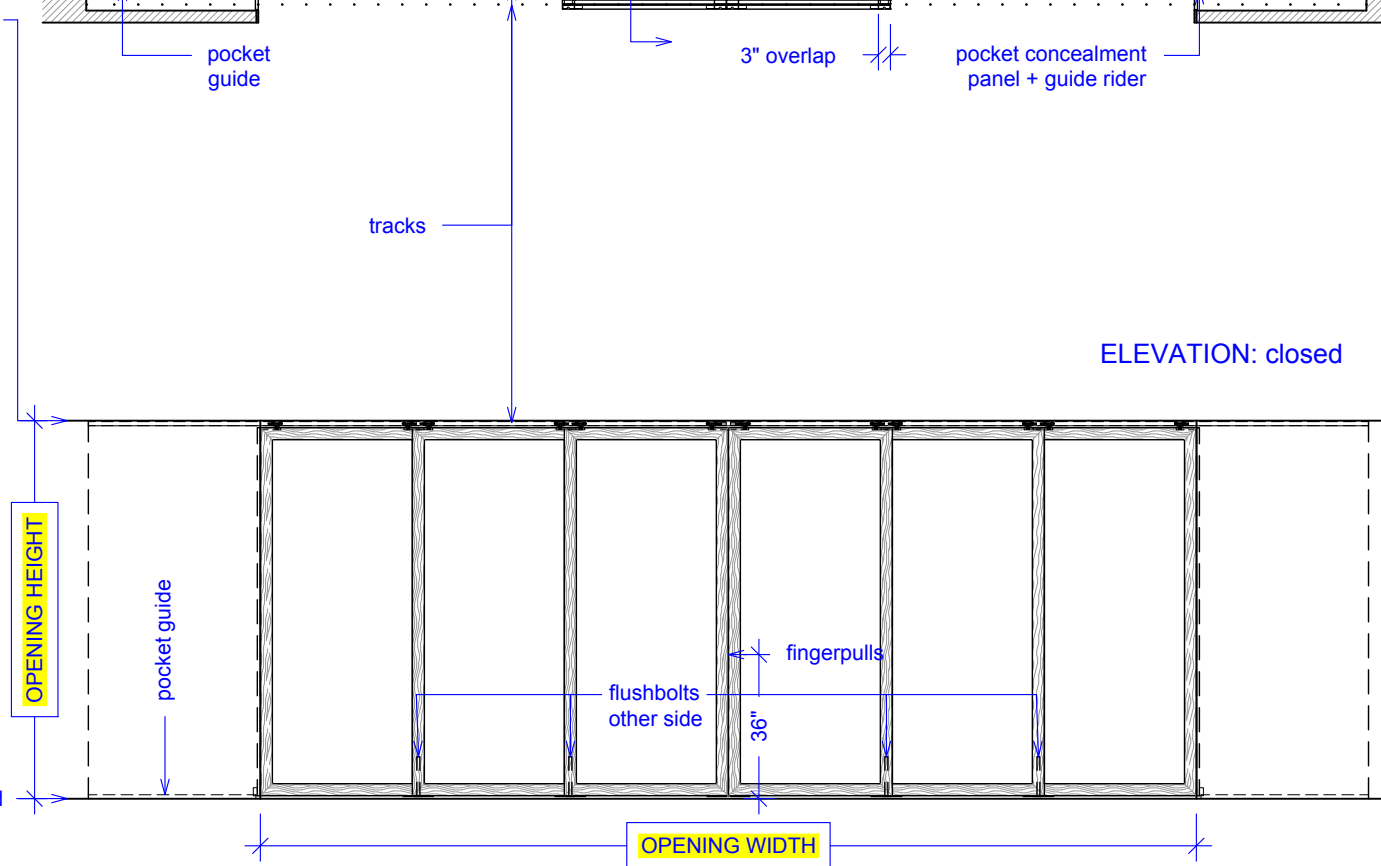
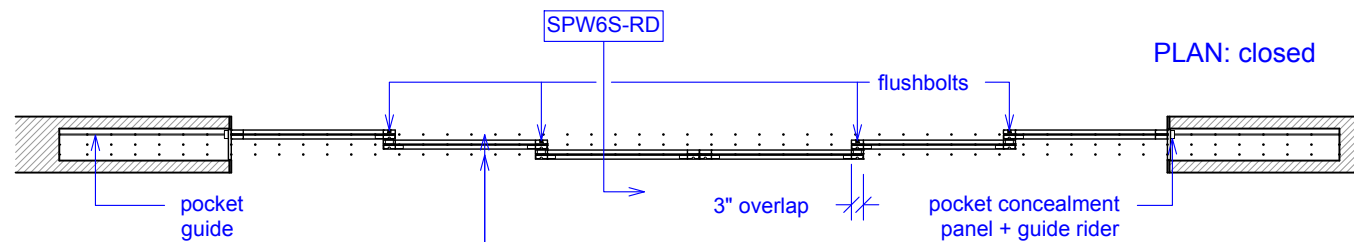
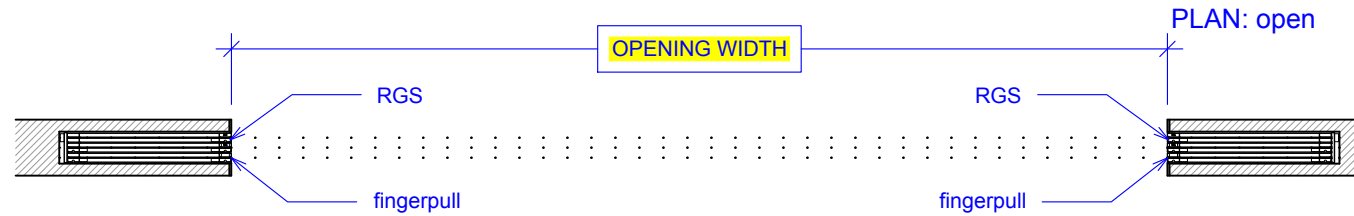
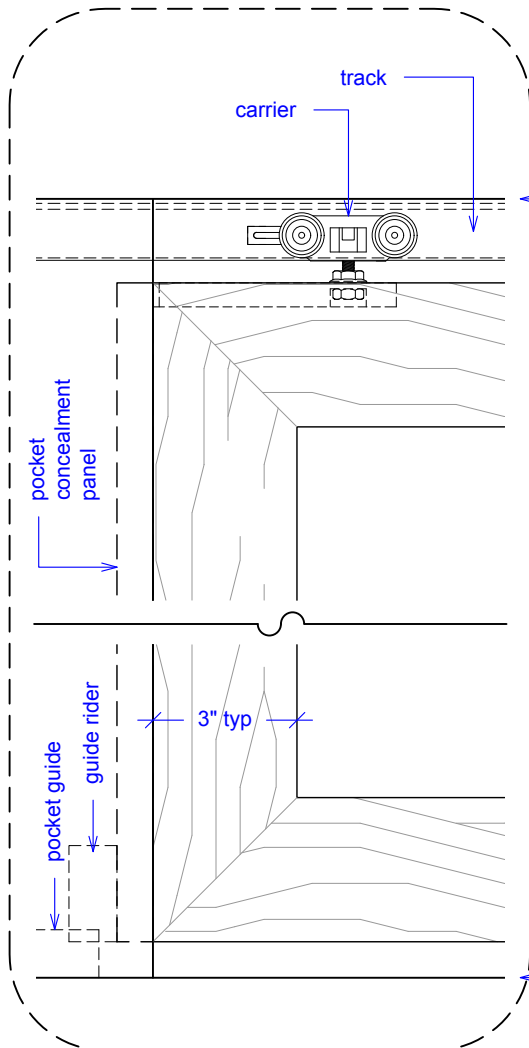
(SPW6S-RD)

ELEVATION

RAYDOOR STANDARD
SYSTEM DRAWINGS
©2020



YOUR OPENING HEIGHT = PANEL + 2 $\frac{1}{2}$ "
YOUR OPENING WIDTH = (6 x PANEL) - 12"

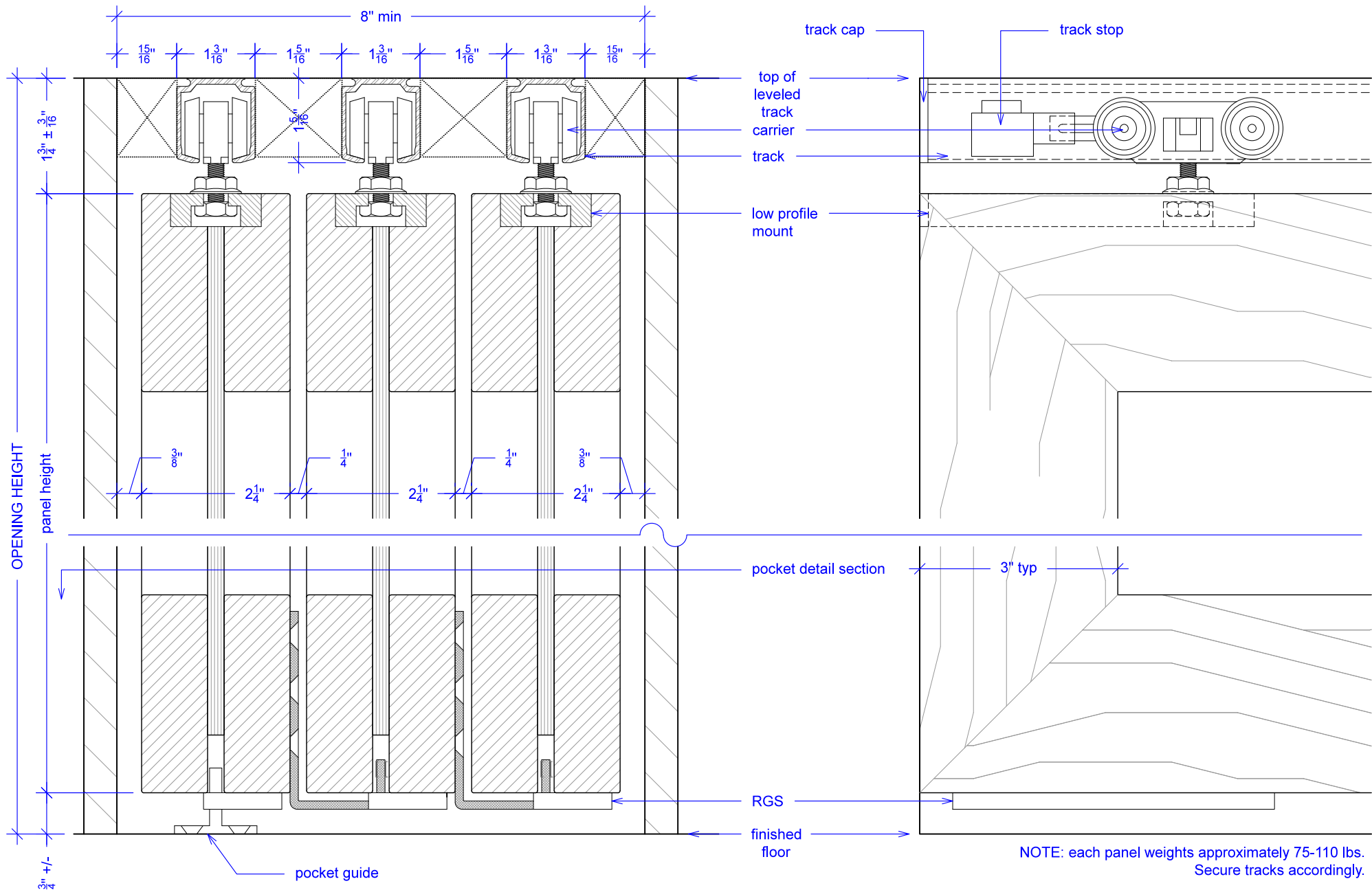


Sliding Pocket Wall, 6 Panels, Symmetrical

(SPW6S-RD)

SECTION

RAYDOOR STANDARD
SYSTEM DRAWINGS
©2020



Sliding Pocket Wall, 6 Panels, Symmetrical

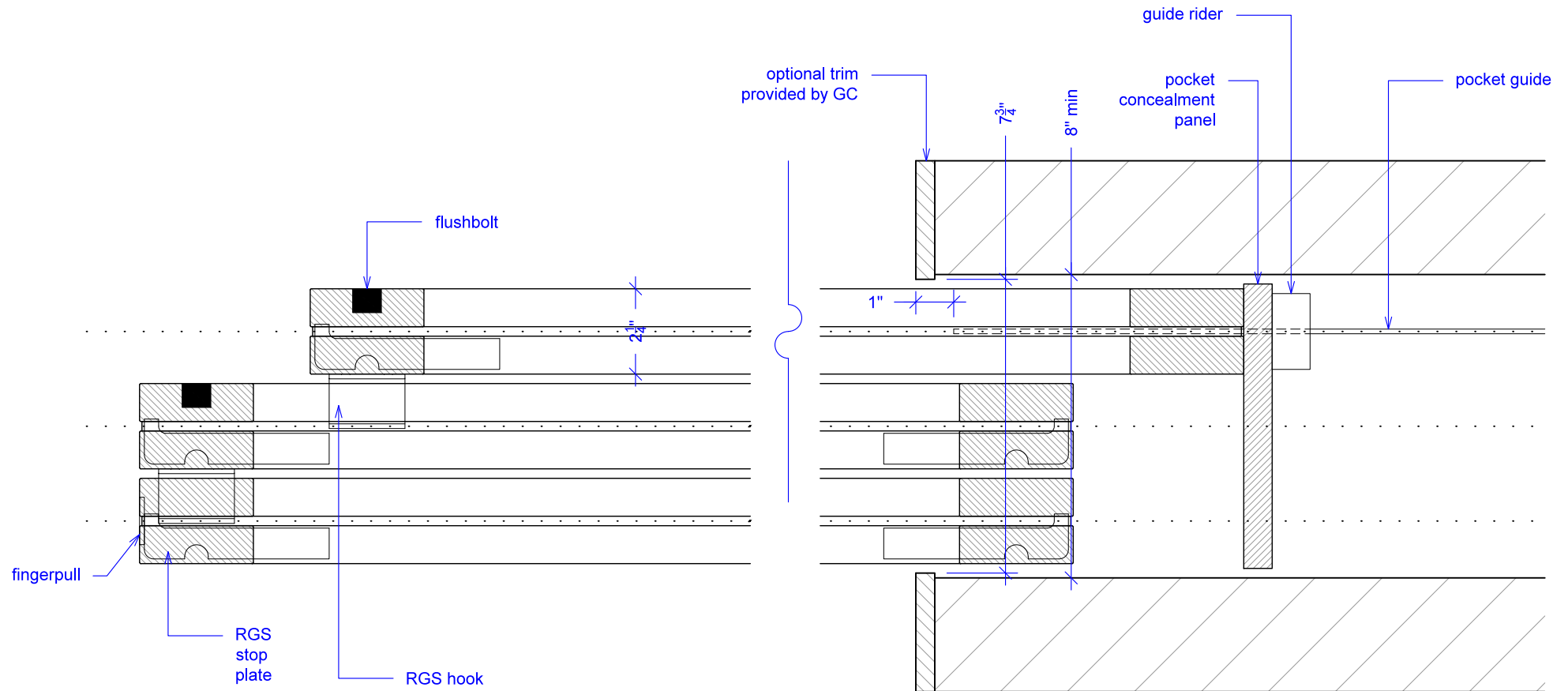
(SPW6S-RD)

POCKET DETAIL

RAYDOOR STANDARD
SYSTEM DRAWINGS
©2020



NOTE: pocket depth should be 2"
deeper than width of doors



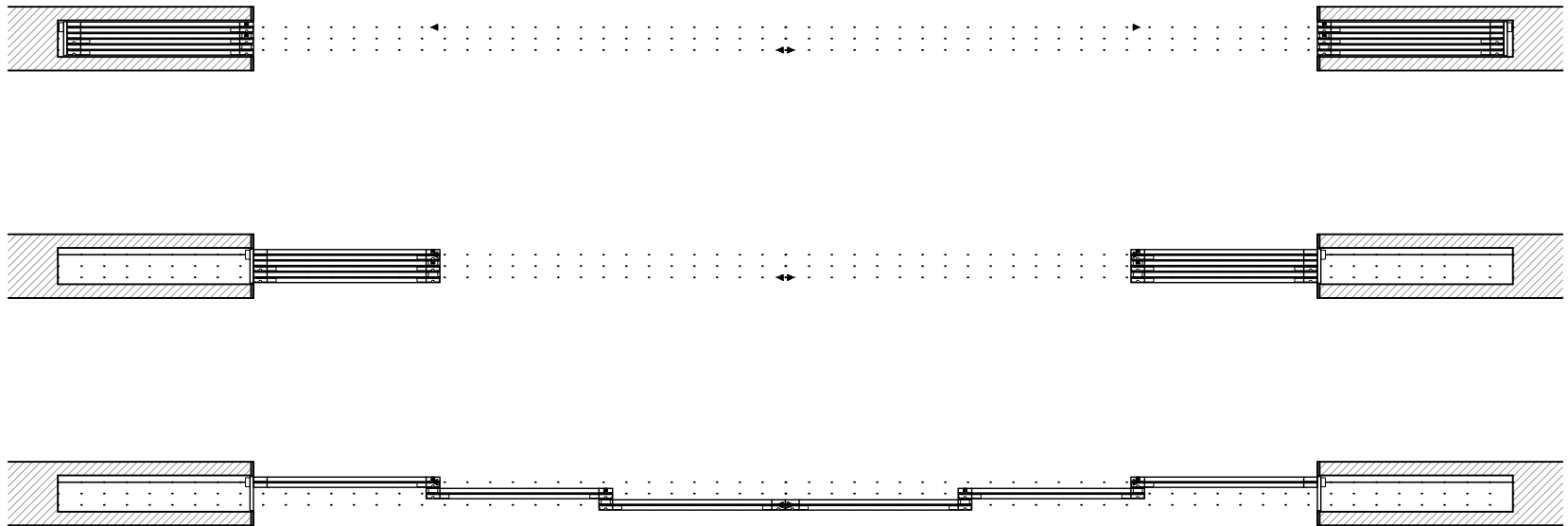
Guide rider is a block with a slit for the pocket guide; it allows for full extension, attach to bottom of concealment panel.

Sliding Pocket Wall, 6 Panels, Symmetrical

(SPW6S-RD)

OPERATION OVERVIEW

RAYDOOR STANDARD
SYSTEM DRAWINGS
©2020



KEY:

□ RGS hook

└─┘ RGS stop

— pocket guide

▶ track stop