

Sliding Pocket Wall w/ Soft-Close, 2 Panels

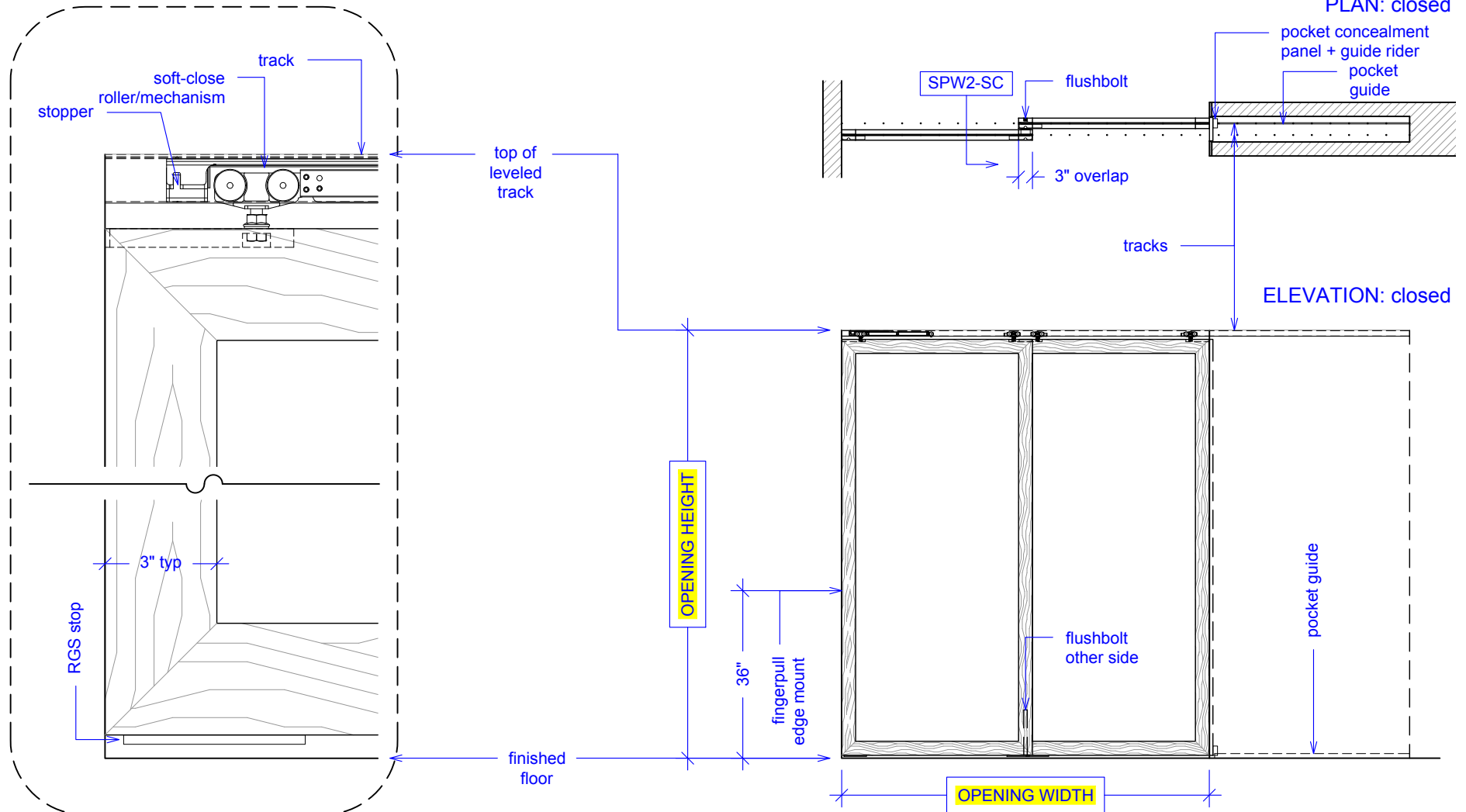
(SPW2-SC)

ELEVATION

RAYDOOR STANDARD
SYSTEM DRAWINGS
©2022



YOUR OPENING HEIGHT = PANEL + $2\frac{5}{8}$ "
YOUR OPENING WIDTH = (2 x PANEL) - 3"

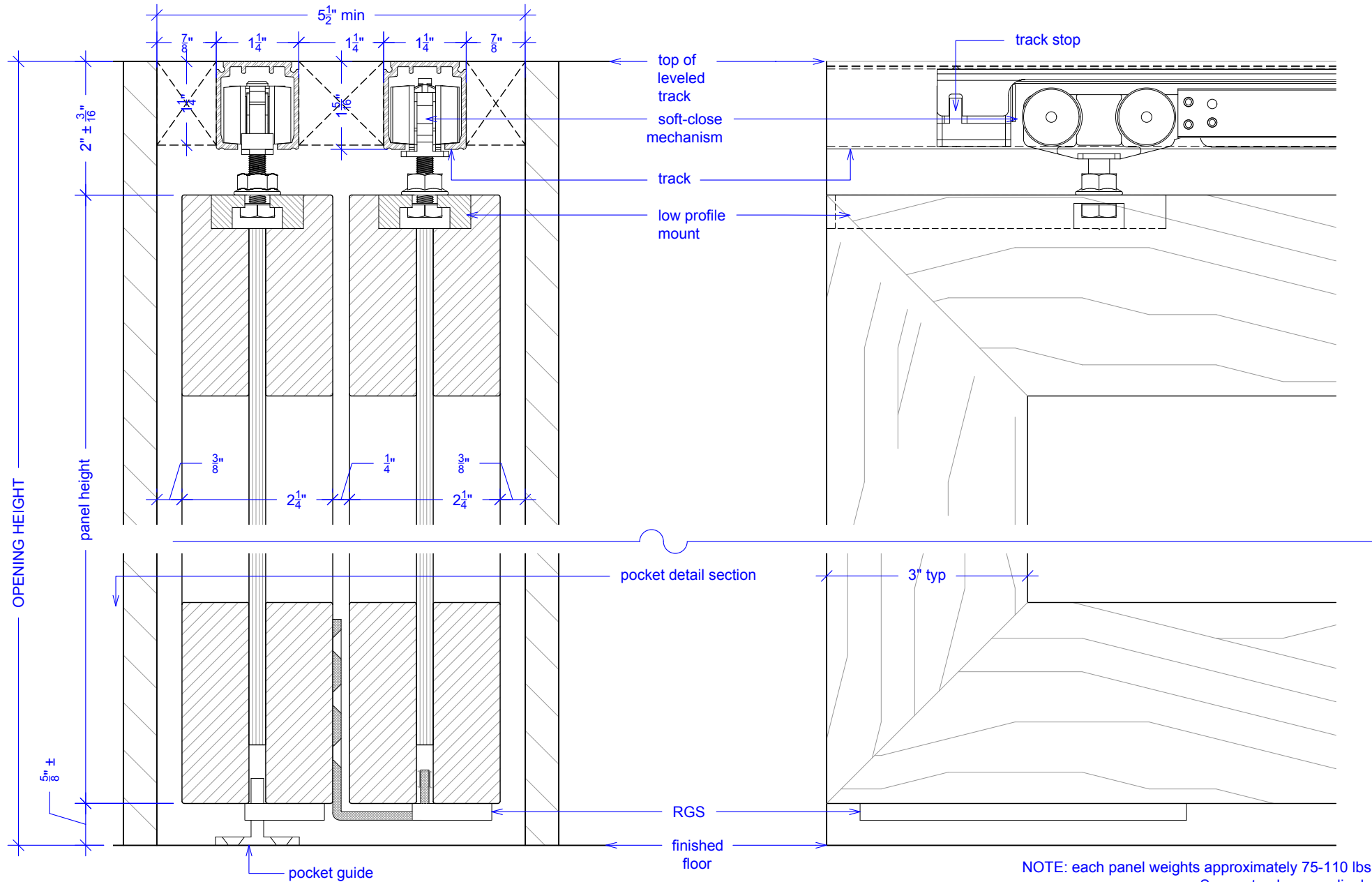


Sliding Pocket Wall w/ Soft-Close, 2 Panels

(SPW2-SC)

SECTION

RAYDOOR STANDARD
SYSTEM DRAWINGS
©2022



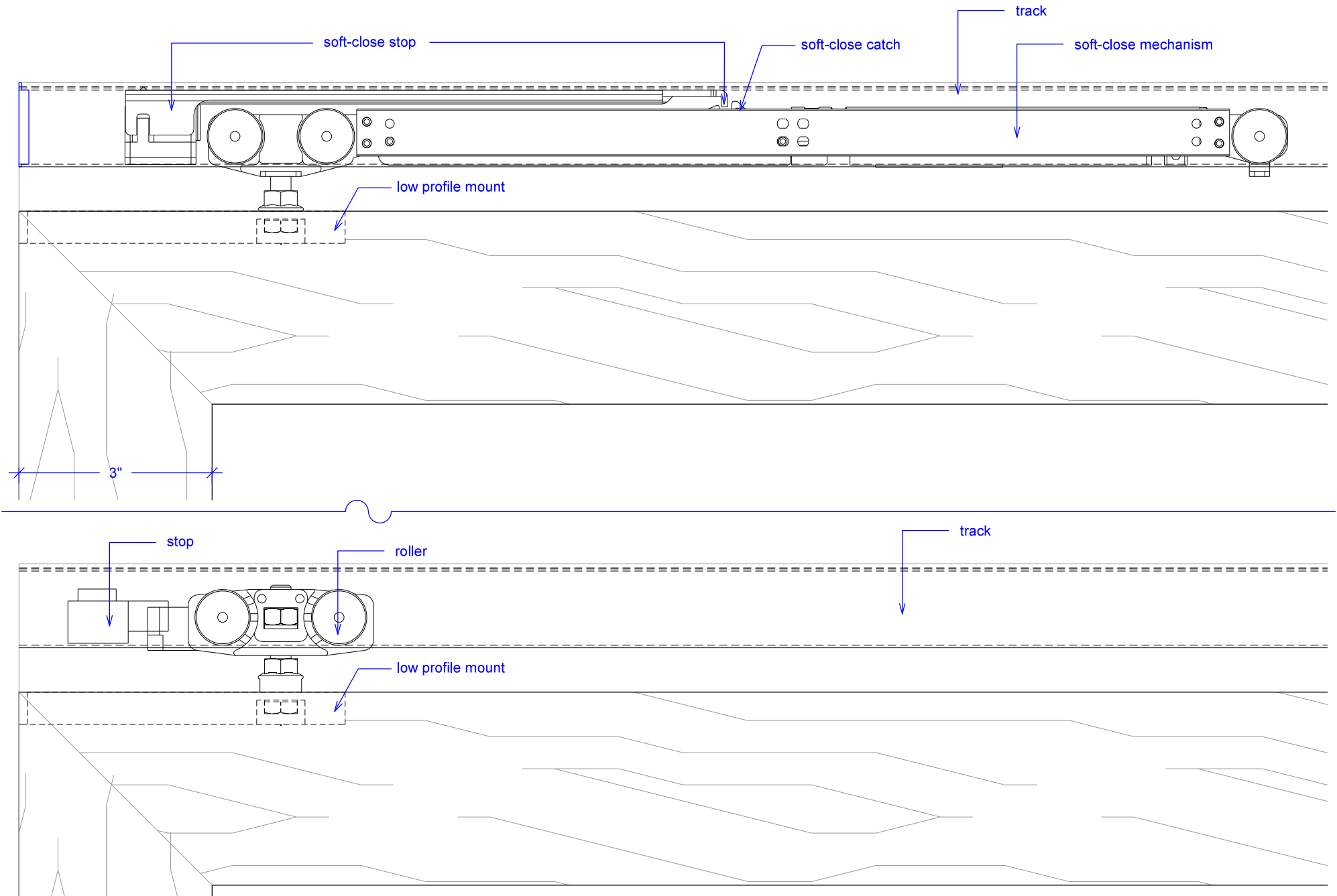
NOTE: each panel weights approximately 75-110 lbs.
Secure tracks accordingly.

Sliding Pocket Wall w/ Soft-Close, 2 Panels

(SPW2-SC)

SOFT-CLOSE HARDWARE

RAYDOOR STANDARD
SYSTEM DRAWINGS
©2020



Sliding Pocket Wall w/ Soft-Close, 2 Panels

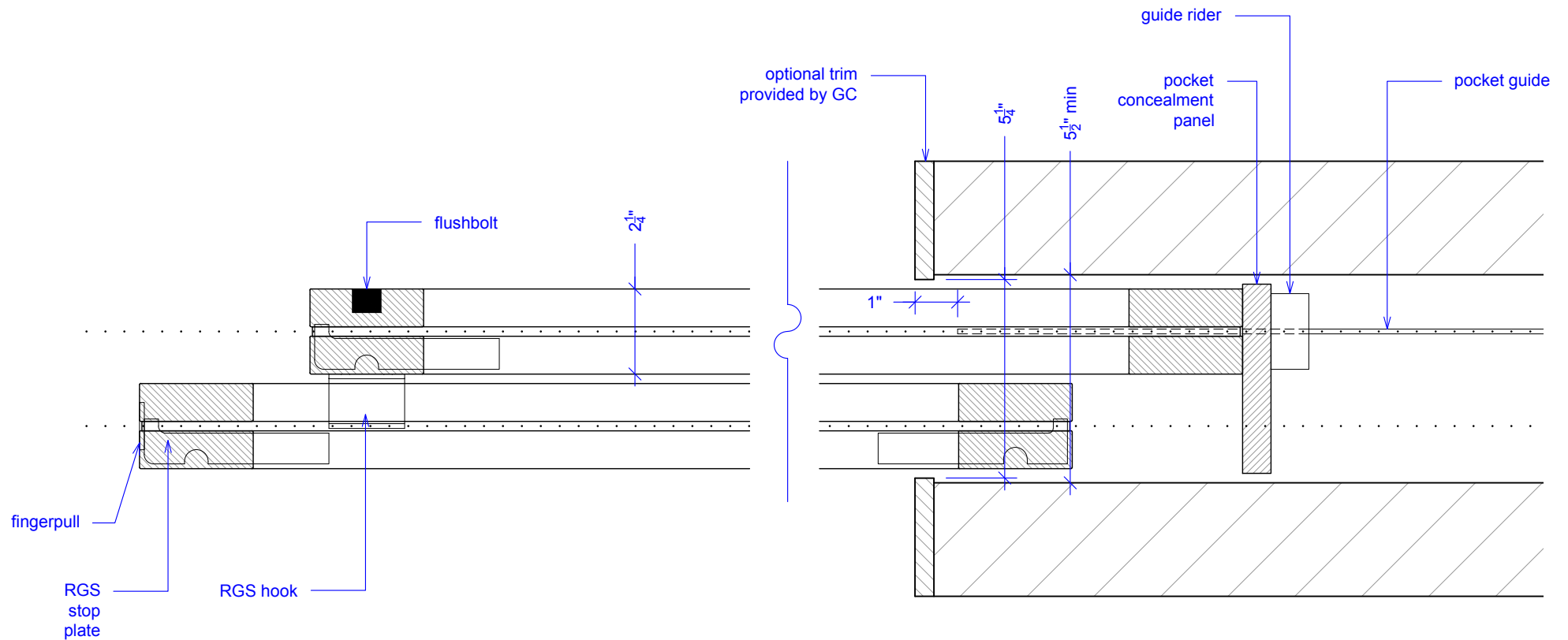
(SPW2-SC)

POCKET DETAIL

RAYDOOR STANDARD
SYSTEM DRAWINGS
©2022



NOTE: pocket depth should be 2"
deeper than width of doors



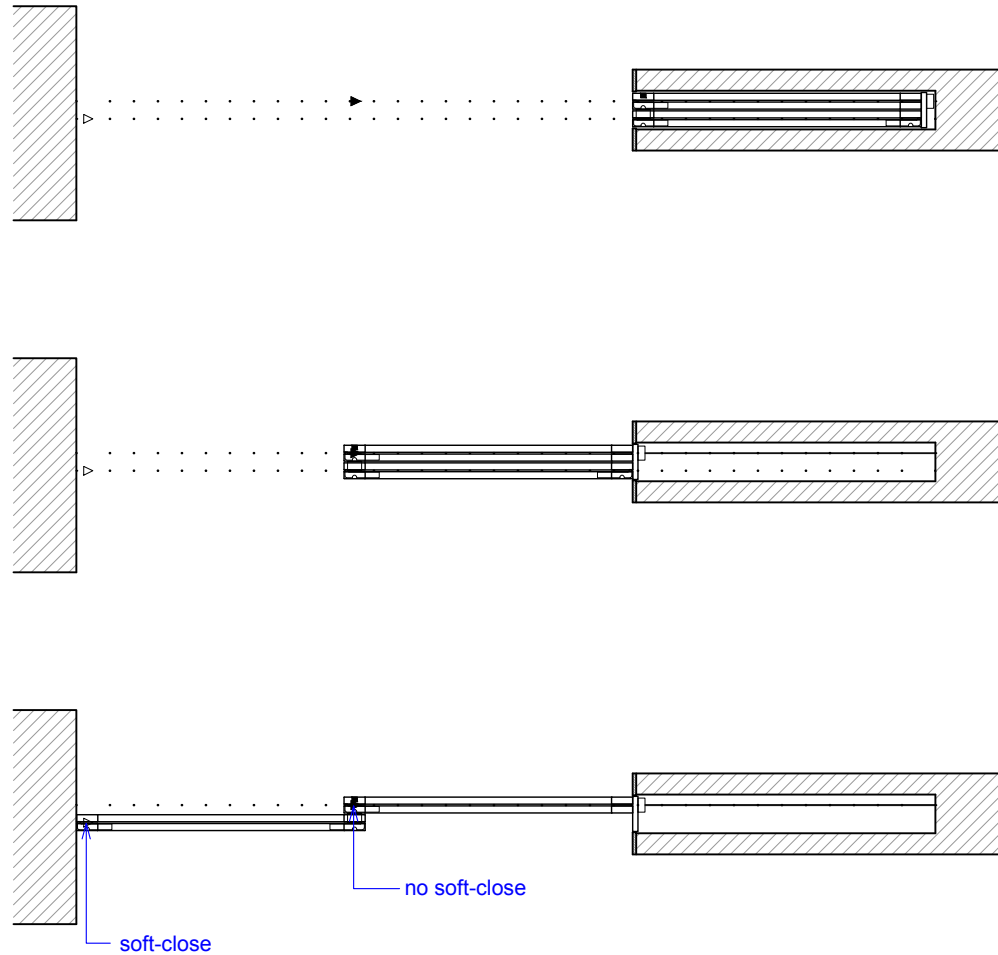
Guide rider is a block with a slit for the pocket guide; it allows for full extension, attach to bottom of concealment panel.

Sliding Pocket Wall w/ Soft-Close, 2 Panels

(SPW2-SC)

OPERATION OVERVIEW

RAYDOOR STANDARD
SYSTEM DRAWINGS
©2022



KEY:

□ RGS hook

▬ RGS stop

— pocket guide

▶ track stop

▷ stopper/release device