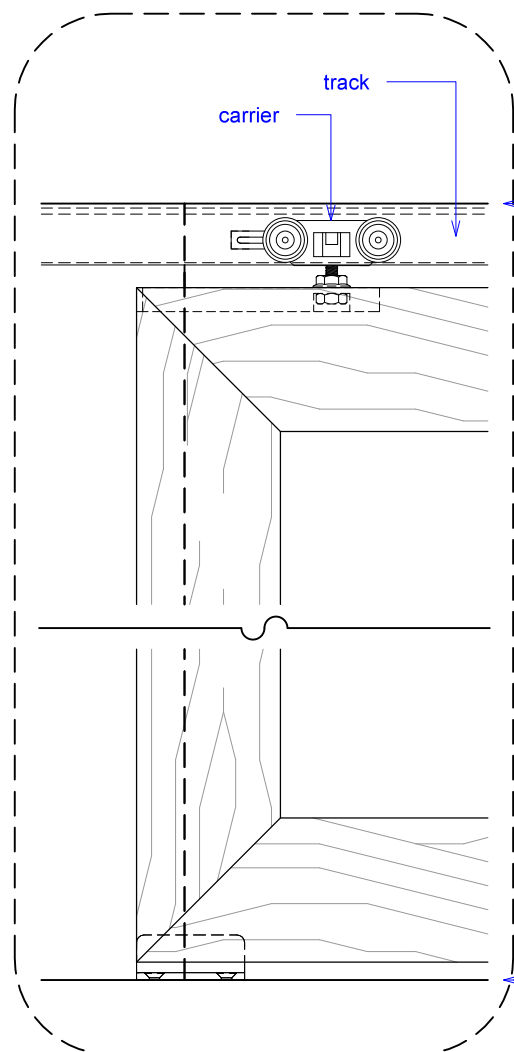


PLAN: open

YOUR OPENING HEIGHT = PANEL + 2 - 1/8"

YOUR OPENING WIDTH = (PANEL x 2) - 2"



top of
leveled
track

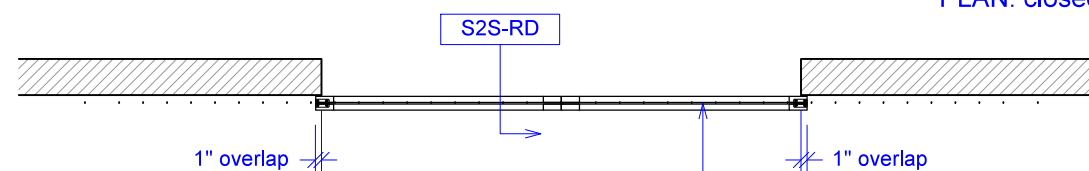
finished
floor



floor guides

1 1/2" overlap

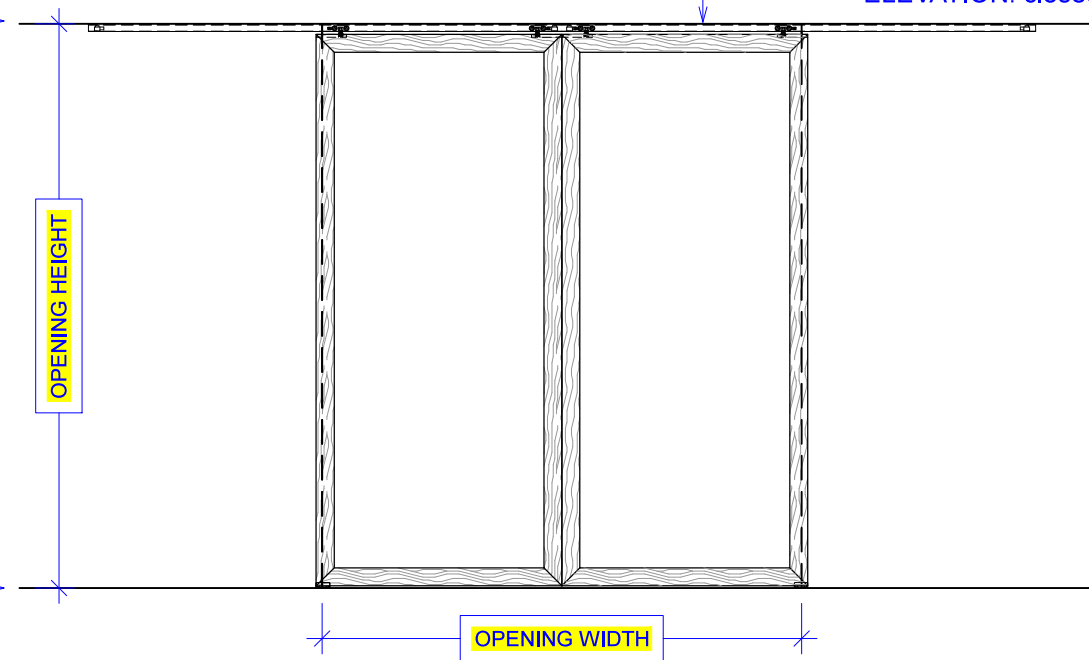
PLAN: closed



1" overlap

track

ELEVATION: closed



OPENING HEIGHT

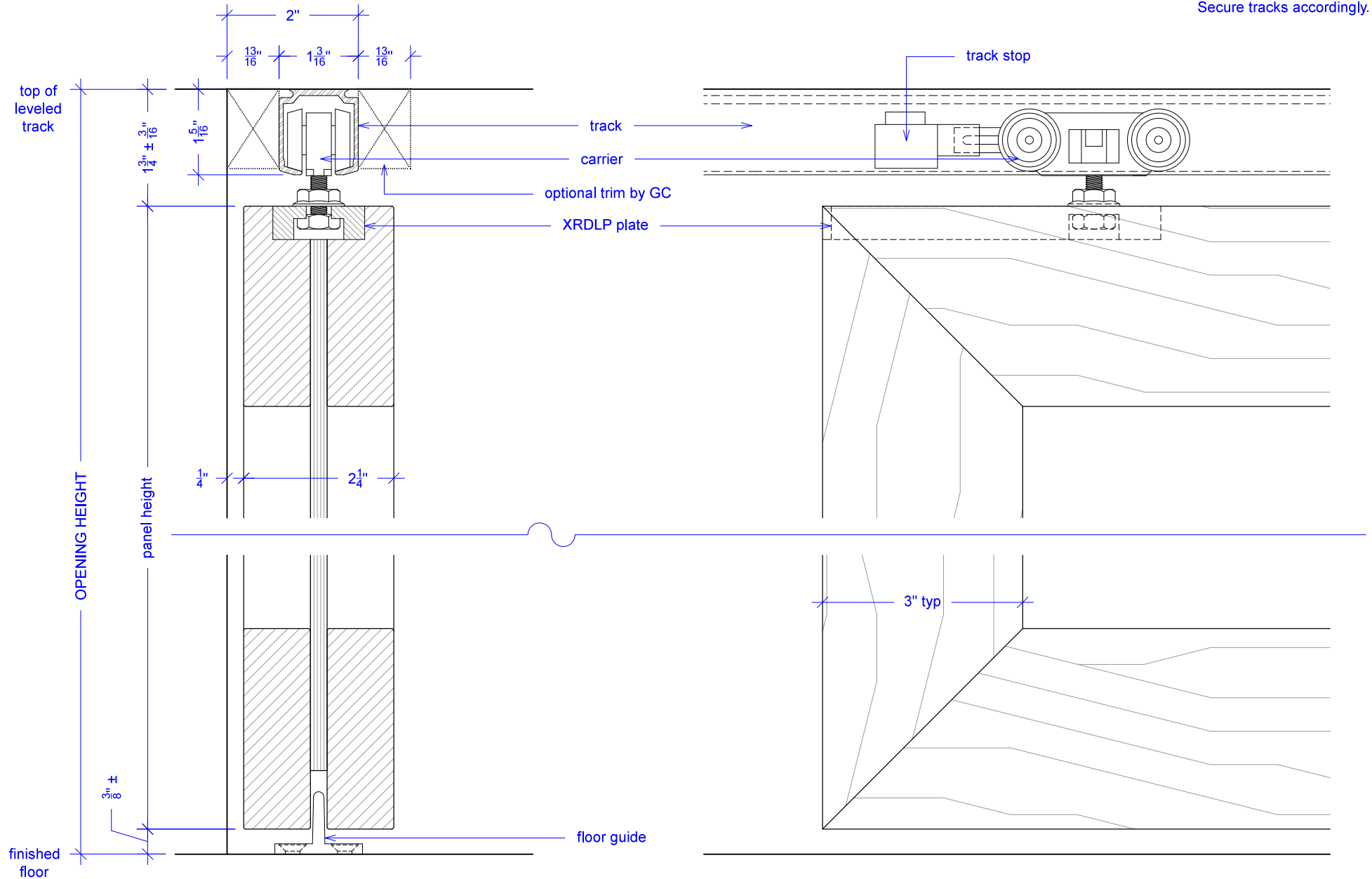
OPENING WIDTH

S2S - 225

RAYDOOR STANDARD
SYSTEM DRAWINGS
©2014



NOTE: each panel weighs approximately 75-110 lbs.
Secure tracks accordingly.





NOTE: each panel weights approximately 75-110 lbs.
Secure tracks accordingly.



KEY:



floor guide



track stop