

S1 - WM

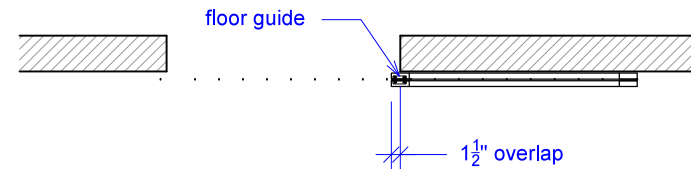
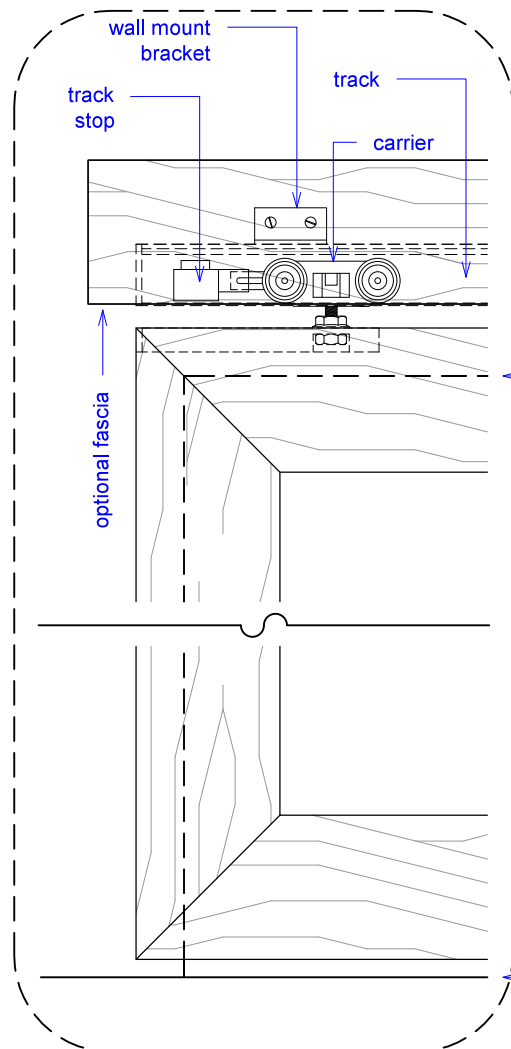
RAYDOOR STANDARD
SYSTEM DRAWINGS
©2014



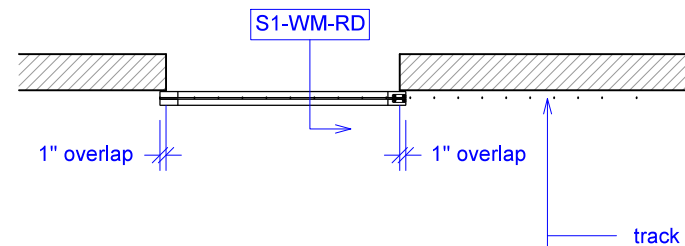
PLAN: open

YOUR OPENING HEIGHT = PANEL - 5/8"

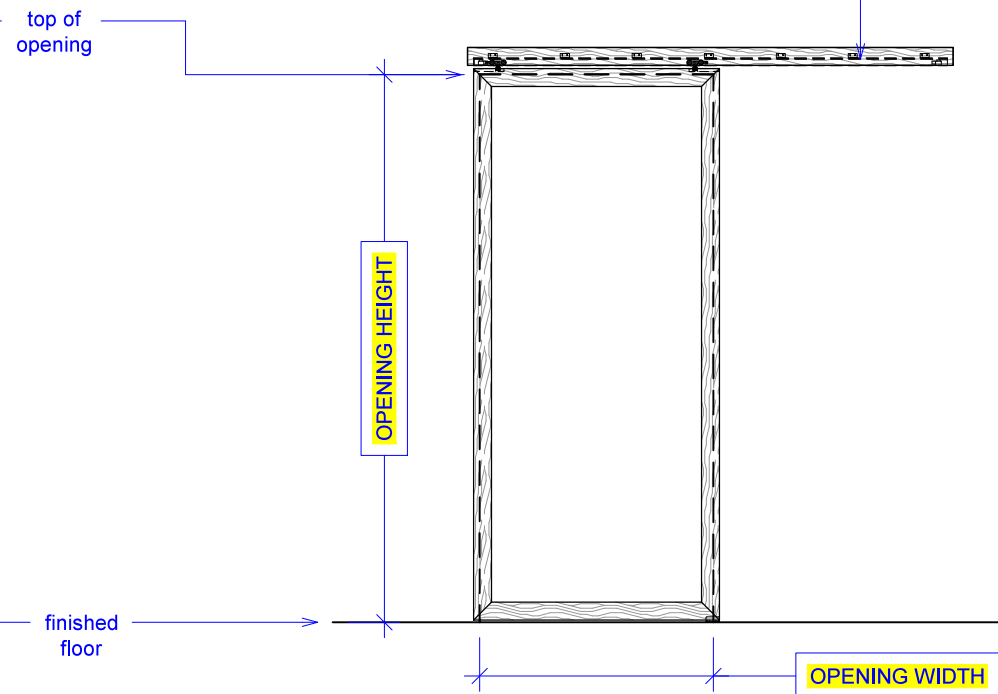
YOUR OPENING WIDTH = PANEL - 2"



PLAN: closed



ELEVATION: closed

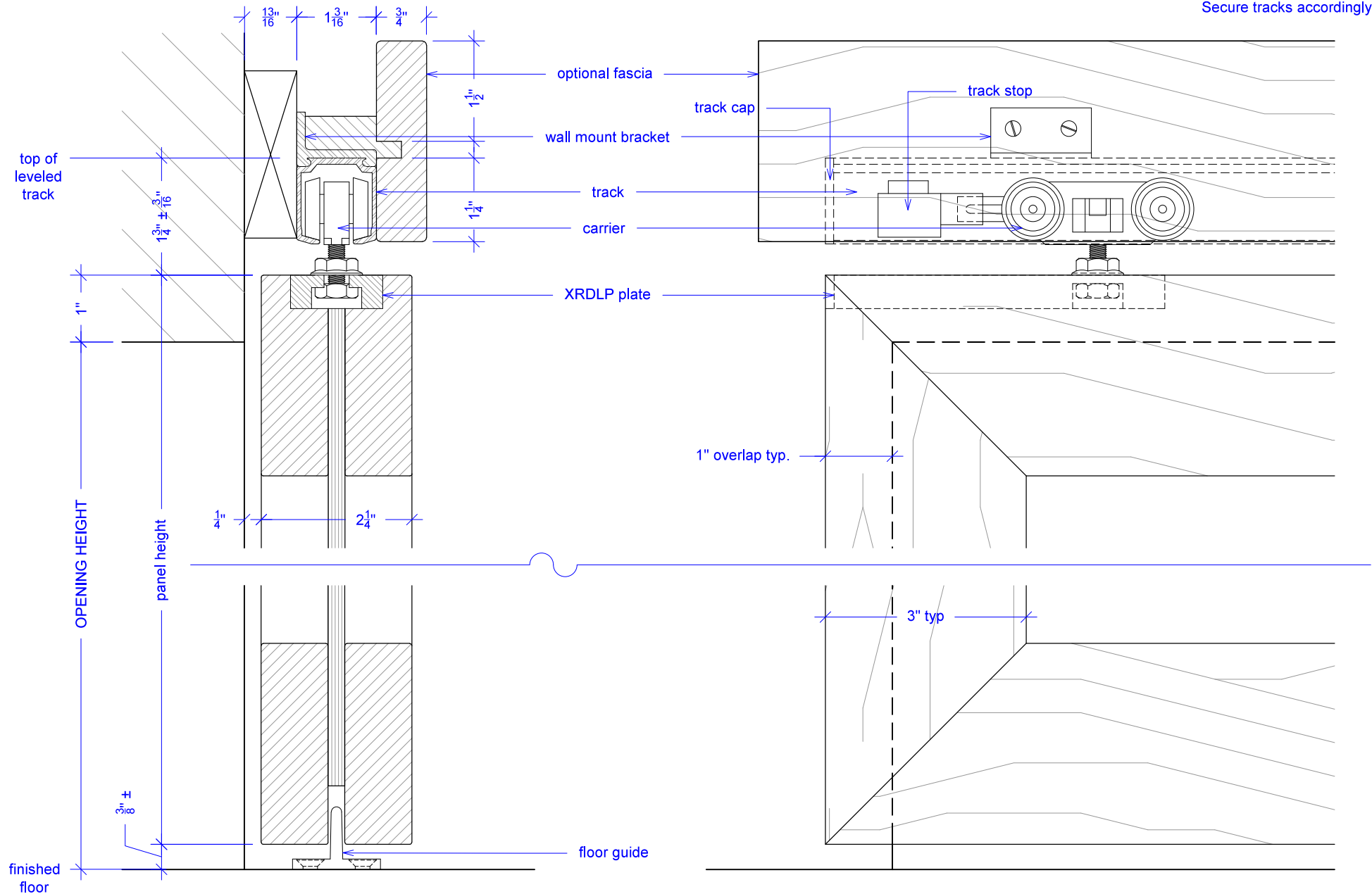


S1 - WM - 225

RAYDOOR STANDARD
SYSTEM DRAWINGS
©2014



NOTE: each panel weights approximately 75-110 lbs.
Secure tracks accordingly.



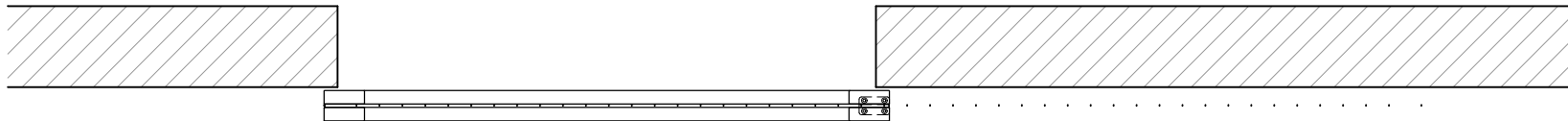
S1 - WM

Operation Overview

RAYDOOR STANDARD
SYSTEM DRAWINGS
©2014



NOTE: each panel weights approximately 75-110 lbs.
Secure tracks accordingly.



KEY:



floor guide



track stop